



**Portsmouth Boat Club
2024 Barnacle Regatta**

Sailing Instructions

1. Rules: The Barnacle Series Races will be governed by the rules as defined by the US Sailing/ISAF Racing Rules of Sailing (RRS) or as modified by these Sailing Instructions.

The following points are emphasized:

a. These races are **for FUN!**

b. **DO NOT INTERFERE with the safe navigation of commercial traffic on the River.**

This means that you yield to tugs, tows, merchant ships, sightseeing vessels, etc.

c. See (a) above.

Competitors shall comply with all Federal, State, and Local laws and safety requirements. Appropriate navigation lights will be displayed after sunset. Specific attention is called to avoiding the areas between security/police boats and Naval Vessels and cruise ships. Do NOT get between a security boat and a protected vessel! Violations of these rules make the boat subject to disqualification, not to mention arrest of the skipper/crew.

2. Handicapping: These races are for monohull sailboats only, greater than 20 feet Length On Deck (LOD), single headsail only. "PHRF of the Chesapeake" ratings will be used. If a competitor does not have a current PHRF certificate, a courtesy rating will be assigned by the RC, valid for the series. The assigned rating is final and cannot be protested.

3. Schedule: There will **NOT** be a Skipper's Meeting. Make sure to read, review, print and follow the 2024 NOR and Barnacle Series Sailing Instructions.

*If you have questions, contact Jimmy Schools, 757 771-1586 cell or jimmyschools@yahoo.com.

Summer Series

Friday nights – May 3rd, May 10th, May 17th, 6:00pm Start

Fall Series

Friday nights – August 23rd, August 30th, September 6th, 6:00pm Start

4. Courses: The courses are sailed around government marks in the Elizabeth River. The RC will post the course in the immediate vicinity of the start/finish line. The start/finish line crosses the mouth of the Southern Branch of the Elizabeth River as defined by the Race Committee (RC) flag (a large Orange flag) on the Portsmouth side of the river (on the Seawall south of Tidewater Yacht Marina or a nearby anchored RC boat) and **the flagpole** on the end of the ship repair pier northwest of the Berkley bridge at Washington point on the Norfolk side of the river.

All marks are to be rounded/passed on the boat's PORT side! Courses and numbers are attached at the end of this document.

5. Postponement: The RC may postpone starts to allow for commercial shipping or to deal with safety issues. The **AP** flag and two horn blasts will be used per the RRS. The start time will be delayed as necessary. The **start sequence** will resume one minute after the **AP** flag is lowered.

Starting: Check-in with the Race Committee at the Starting Line. The Starting Sequence will commence at 6:00 pm. The time limit is two hours from the start time. RRS 26 will be used. There will be one start for all fleets and classes. The class flag will be the “5” pennant (NS). The normal start sequence will be as follows:

5 Minutes before Start – WARNING Class Flag UP with 1 long horn.

4 Minutes before Start – PREP "P" Flag (Preparatory) UP with 1 short horn.

1 Minute before Start – "P" Flag DOWN with 1 long horn.

START - Class Flag DOWN with 1 long horn.

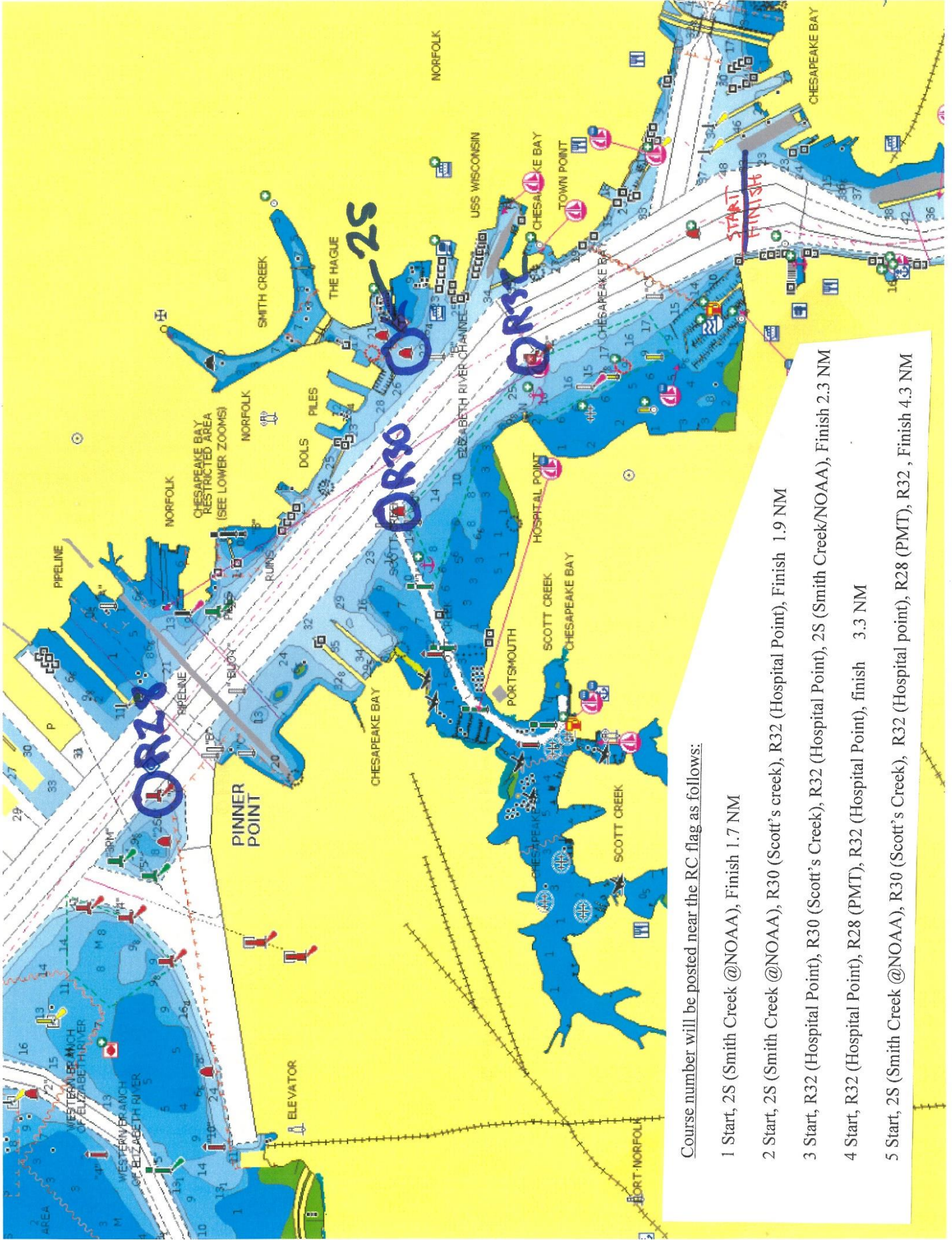
In the event a competitor is over the start line early (“OCS”), a single horn blast will sound and the X flag will be raised per the RRS. The RC will attempt to hail that competitor and may make an announcement on VHF channel 72. Any boat that is OCS must turn back and restart or it will be disqualified for the race.

6. Shortening the Course: After the starting signal, the race committee may shorten the course at any Mark for all classes by moving the committee boat to a position near the selected rounding mark and displaying Code Flag S.

7. Finishing: Boats retiring or unable to finish before the time limit are requested to hail the RC (callsign “Barnacle Race Committee”) on VHF channel 72. As boats finish, the RC will sound one short horn and say the boat’s name.

8. Classes/Scoring: Modifying RRS, paragraph A4.2. “Low Point” scoring shall be used under the PHRF Time On Distance system. Boats starting but not finishing and boats that show up for a race and check-in but do not start will be scored the total number of boats that started the race in the class PLUS one. Boats not showing up or not checking in for a race will be scored the total number of registered boats in the class PLUS one. Disqualified boats will be scored the total number of registered boats in the class PLUS two. Two completed races shall constitute a completed Series. If three races in a Series are completed, the boat’s high score will be dropped. Boats will be scored together in their respective classes. Normally at least 3 boats establish a class. It is the intent of the RC to have boats of similar sailing/racing characteristics classed together, i.e., hardcore racers race as a class, cruisers & OD likewise.

9. Protests: Sailboat racing is a self-policing sport, based on fair play and honesty. Sometime mistakes happen on the race course which causes one boat to foul another. Years ago, disqualification was the only remedy for the offending boat. These races are for FUN and we want to keep everyone racing. The preferred remedy for a foul on the course is (1) right of way boat verbally notify offending boat of the infraction and (2) the offending boat shall perform the required penalty turn(s). After getting well clear of other boats as soon after the incident as possible, the boat takes penalty turn(s) in the same direction with each turn consisting of one tack and one gybe. If a boat desires to file a formal protest, they shall follow the procedure of RRS 61, including hailing offending boat, displaying protest flag immediately, notifying the RC at the finish, and submitting a completed US Sailing protest form within 1 hour after the last boat finish. A protest committee will be convened within the week to decide the merits of the protest.



Course number will be posted near the RC flag as follows:

- 1 Start, 2S (Smith Creek @NOAA), Finish 1.7 NM
- 2 Start, 2S (Smith Creek @NOAA), R30 (Scott's creek), R32 (Hospital Point), Finish 1.9 NM
- 3 Start, R32 (Hospital Point), R30 (Scott's Creek), R32 (Hospital Point), 2S (Smith Creek/NOAA), Finish 2.3 NM
- 4 Start, R32 (Hospital Point), R28 (PMT), R32 (Hospital Point), finish 3.3 NM
- 5 Start, 2S (Smith Creek @NOAA), R30 (Scott's Creek), R32 (Hospital point), R28 (PMT), R32 , Finish 4.3 NM